

A photograph of a modern architectural corridor. The walls are made of large, light-colored concrete panels with a grid of small circular holes. The floor is made of large, light-colored stone tiles. The corridor is illuminated by warm, yellow linear lights embedded in the walls and floor. The sky is a deep blue, suggesting dusk or dawn.

ADONIS True Color

Infinite light lines for all environments

LED LINEAR™
lighting solutions

Member of the
Fagerhult Group

ADONIS True Color

HOMOGENEITY AND CONTINUITY

- Creating visual effects with linear light adds a further dimension to architecture. By integrating light to a facade, it's possible to design an eye catching building with distinct, slim, lines of light.
- ADONIS True Color is a minimalistic linear luminaire suitable for facade, ceiling direct view applications in- and outdoor as well as in-ground for indoor installations. It complements VENUS by being specially developed for linear applications and provides a higher lumen output. A possible output of 2,520 lm/m (768 lm/ft.) combined with CCTs ranging between 2,000K to 5,000K makes ADONIS True Color a multifunctional luminaire.
- The luminaire is based on a functional powder coated aluminum profile in combination with polyurethane encapsulation which provides a high degree of robustness. Its ingress reaches IP67 as well as an IK10 impact resistance. Also, LED Linear's Tj Away technology enables the implementation of high lumen outputs in a minimal form factor.

KEY FEATURES

STRAIGHT LINES OF LIGHT

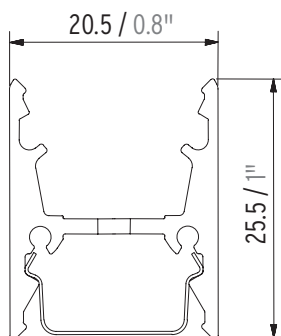
By making it possible to add infinite lines of light, ADONIS True Color is an asset to any construction. These lines reach perfection through the fully homogeneous and dot free light emission surface. Its translucent end caps offer the possibility to achieve a fixture-to-fixture installation with perfect light overlap.



KEY FEATURES

INVISIBLE CABLING

The cable groove makes cables and mounting clips disappear, keeping a straight and clean line of light. The left image illustrates the profile where the fixture is inserted in the upper channel and cables run below. The right image shows how clips and cables won't be visible when multiple fixtures are mounted in line.

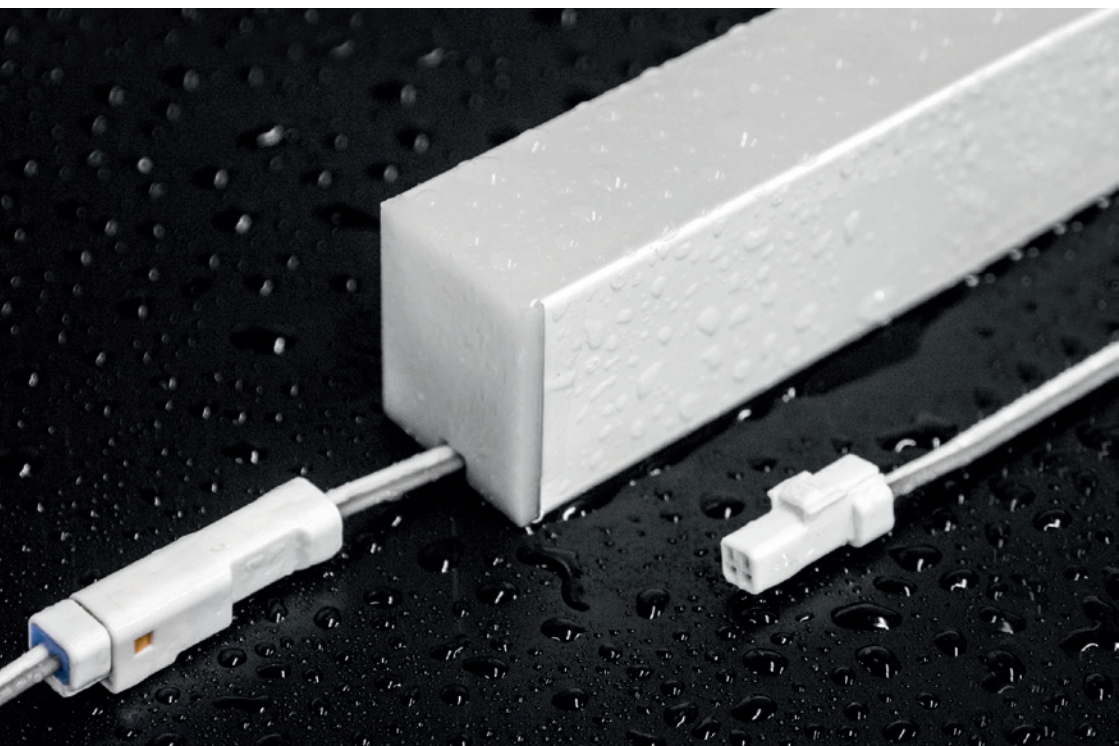


KEY FEATURES

IP67 & IK10

The IP67 and IK10 classifications is achieved through a polyurethane encapsulation and an aluminum housing. This makes ADONIS True Color resistant to environmental and mechanical impact.

IK10 means that the fixture can withstand an impact of 20 Joule, equivalent to 5 kg dropped from 400 mm (1.31'). Its IP67 rating implies that ADONIS True Color is resistant to temporary immersions. Also, the use of polyurethane grants ADONIS True color further protection against UV-light, saltwater and solvents.



MOUNTING

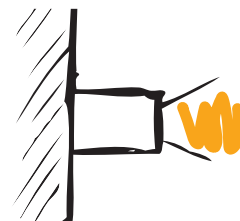
The different mounting options are recessed, surface and in-ground. It is possible to mount ADONIS True Color both horizontally and vertically, offering creative freedom. The in-ground solution has been upgraded by a new mounting channel, improving drainage. Therefore, ADONIS True Color is applicable in protected outdoor environments. The new mounting channel also protect the fixture from being removed offering an extra degree of protection against vandalism.



Recessed



Surface

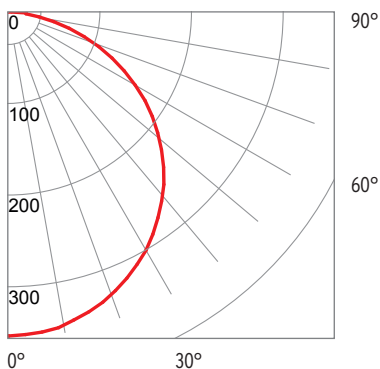


In-ground



TECHNICAL DATA

- Lumen output from 230 lm/m to 2,520 lm/m (70 lm/ft to 768 lm/ft)
- Color temperature between 2,000 K and 5,000 K
- CRI up to 95
- IP 67 & IK10
- Efficiency up to 67 lm/W
- Available in IQ White and RGB
- Lifetime 60,000 h L80/B10
- RGB lifetime 30,000 h



The opal light distribution of ADONIS True Color makes it perfectly suitable for setting contours to multiple constructions.

LIGHTING INNOVATIONS

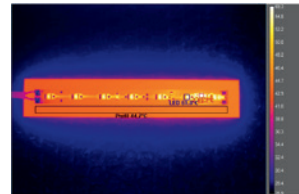
TRUE COLOR

ADONIS True Color has an optimal rendition of the LED spectrum, meaning minimal color shift. This enables an easier combination with other luminaires within the same facade by offering an overall color consistency.

Tj Away®

LED LINEAR™ TECHNOLOGY

ADONIS True Color embeds the LED Linear™ Tj Away® technology which provides optimal heat dissipation of the LED to the housing profile. This enables the miniaturization of the luminaire's footprint while ensuring an extended lifetime compared to conventional LED technologies.

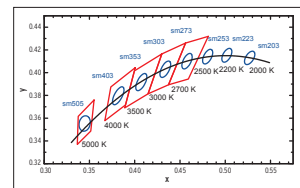


Experimental setup: 40 W/m (12 W/ft) LED tape with thin flexible PCB mounted on flat aluminum plate LED temperature does not exceed 60°C (140°F).



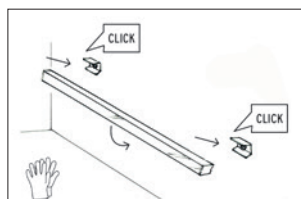
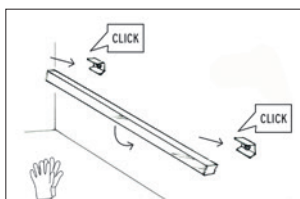
**ONE
BIN
ONLY**

Color consistency plays a key role as much as homogeneity in any linear lighting application. To ensure an outstanding quality of the light, LED Linear™ introduced One Bin Only which ensures that all LEDs used in our luminaires are picked from one bin centered on the target CCT within a 3 step MacAdams Ellipse. They are used to determine visual color deviations and indicate differences in light color of individual LEDs. 3 step MacAdam ensures a color variation unnoticeable by the human eye and therefore an optimal lighting quality.

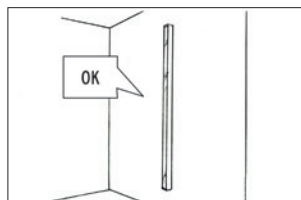
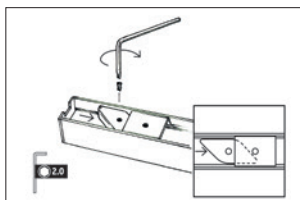


Black Body Curve —
LED Linear™ Binning —
ANSI Binning —

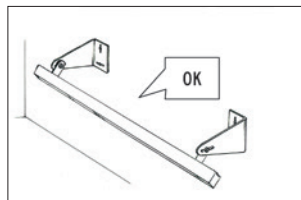
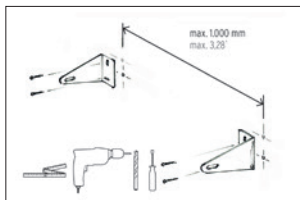
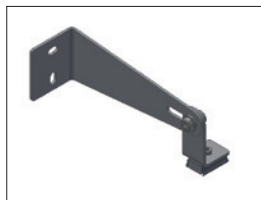
MOUNTING



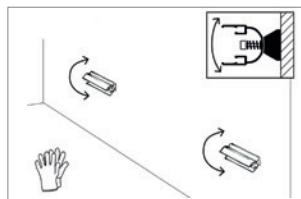
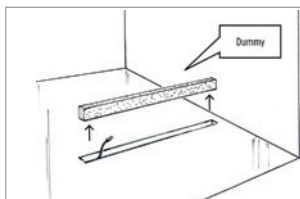
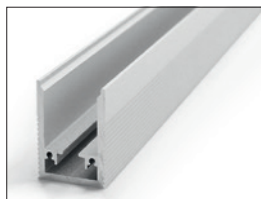
ADONIS True Color is easily installed with the mounting clip



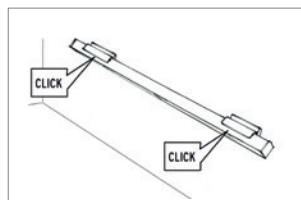
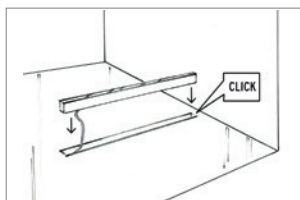
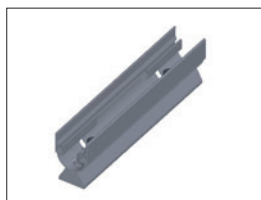
Vertical mount requires a mounting lock



The adjustable wall mount set suits applications that require the possibility to tilt the fixture



In-ground channel improves drainage and protect the fixture



Adjustable mounting clip

Please see our detailed mounting instructions on the website

REFERENCES



Integration into floor and lounge area



Straight light lines in ceiling construction



Illumination of entrance areas in public buildings or hotels



Highlighting facades making buildings impressive

Please scan the QR Code for more
detailed information about
ADONIS True Color IP67

