

# MARS EVE

The All New Wall Washer

**EVEN ILLUMINATION. UNMATCHED UNIFORMITY.**

**LED LINEAR™**

A Fagerhult Group Company

ILLUMINATE INNOVATION.

# SHAPING THE FUTURE OF LIGHT.

LED Linear is driven by a singular vision: To create and supply innovative, high-performance linear LED lighting solutions that are as sustainable as they are inspiring. With a deep commitment to quality and craftsmanship, we design and manufacture LED lighting systems for a multitude of applications while setting the standard for excellence across the industry.

Founded on the belief that lighting can transform spaces and experiences, we strive to blend aesthetics with unparalleled functionality. Our mission is to push the boundaries of lighting technology, creating energy-efficient, customizable, and reliable solutions that meet the needs of our customers while minimizing their environmental impact.

We invite you to join us in illuminating the way forward – creating smarter, more sustainable, and comfortable environments for all to enjoy.



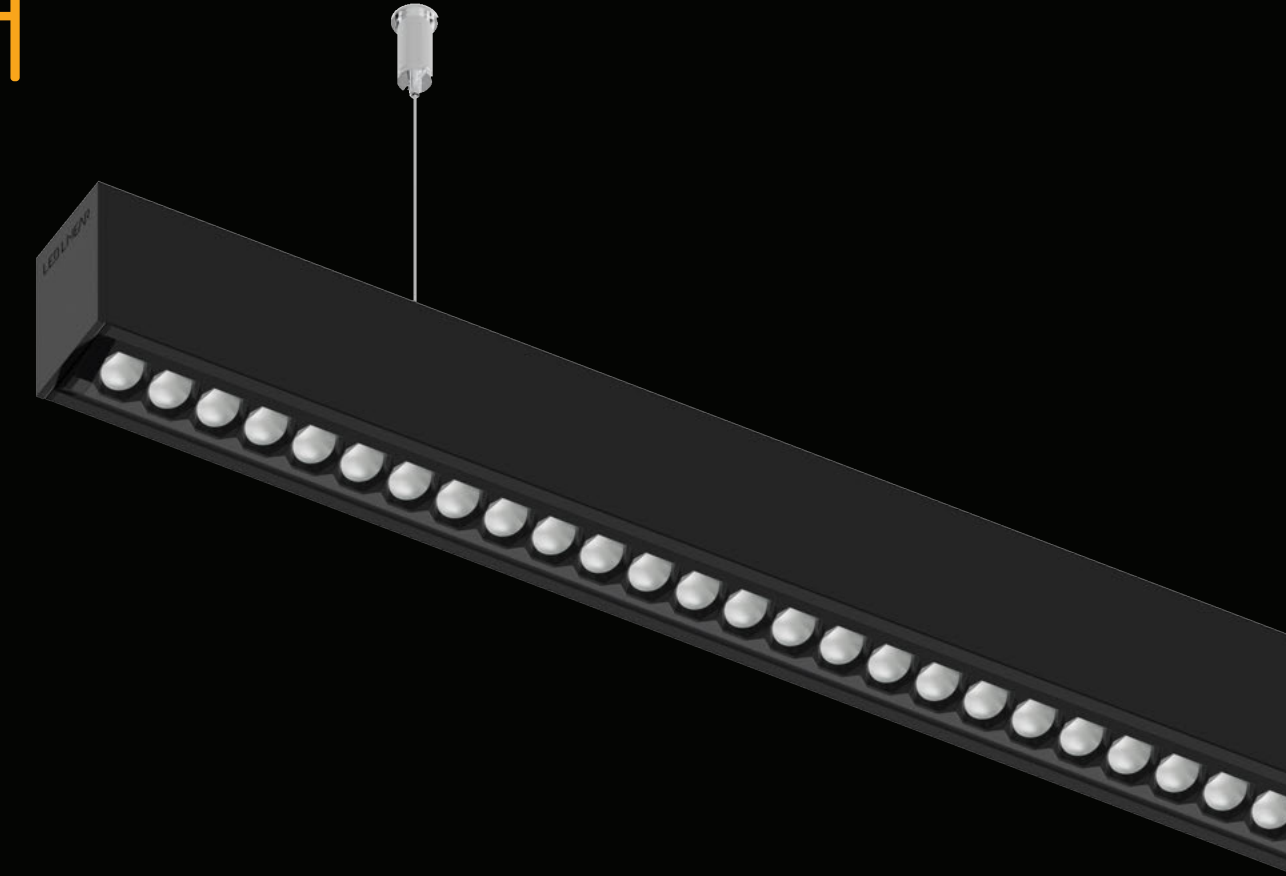
## TABLE OF CONTENTS

02	WALL WASH LIGHTING
03	MARS EVE WALL WASH
05	KEY FEATURES
11	DIMENSIONS
14	COLOR RENDITION
15	TECHNOLOGY
17	SMART LIGHTING
18	SUSTAINABILITY
19	VR EXPERIENCE





# WALL WASH LIGHTING

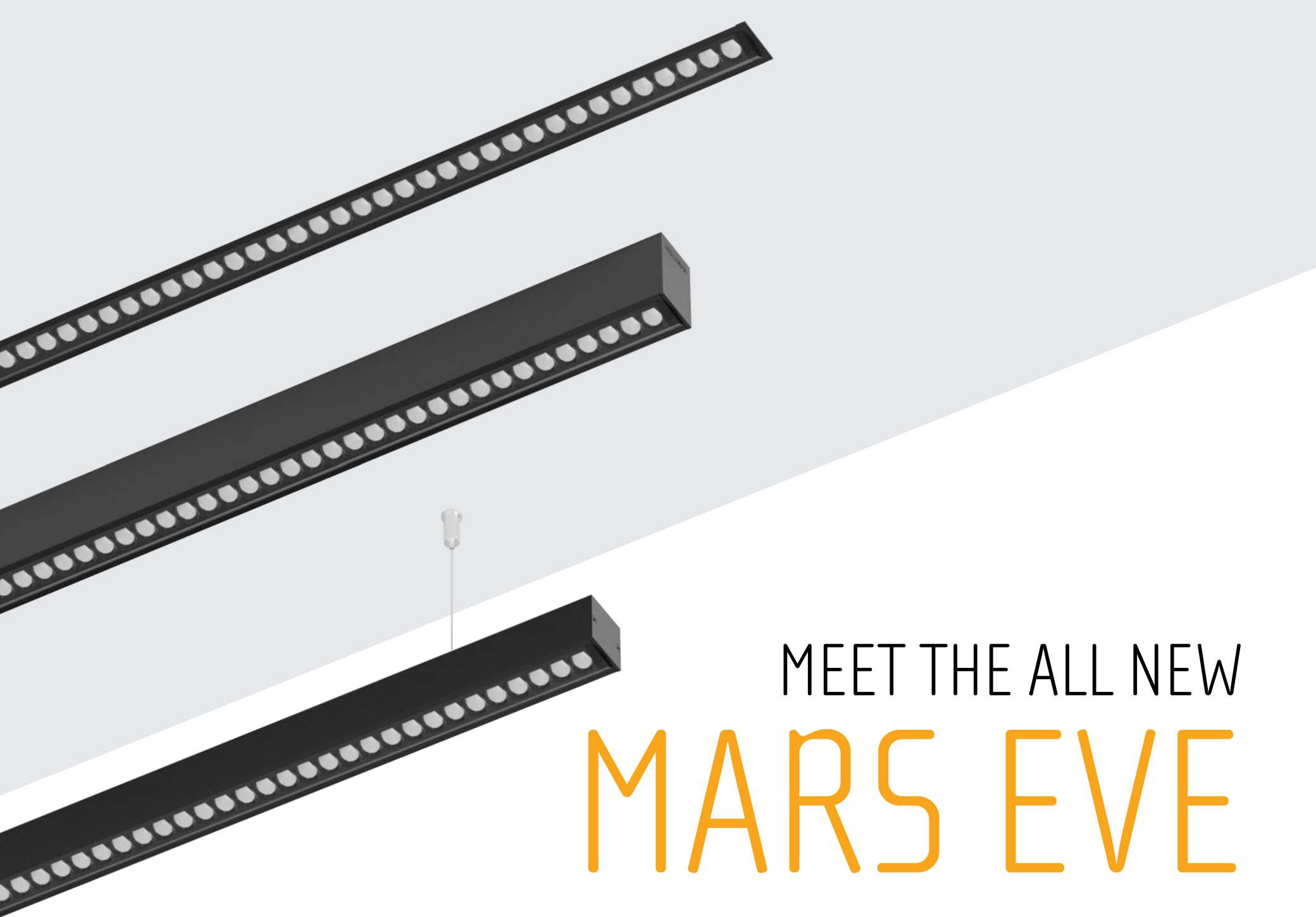


## UNIFORM WALL ILLUMINATION EXPANDS SPACES AND HIGHLIGHTS DETAILS

By illuminating walls brightly and evenly, wall wash lighting expands rooms and highlights architectural details without stealing the scene. MARS EVE creates harmonious luminance ideal for galleries, museums, offices, public buildings, and other spaces where even the smallest details matter.

## BOOST WELLBEING, PRODUCTIVITY, AND SPACE PERCEPTION

Wall wash luminaires enhance human-centric spaces by supporting the visual, emotional, and biological needs of people with even, uniform lighting. The popular lighting technique creates pleasant atmospheres in public, commercial and residential environments, all the while improving the orientation within the space.



# MEET THE ALL NEW MARS EVE

MARS EVE WALL WASH

## EVEN ILLUMINATION. UNMATCHED UNIFORMITY.



### A PERFECTLY EVEN ILLUMINATION.

Imagine stepping into a space where the lighting adapts to your presence, creating a visually comfortable ambiance tailored to your exact needs at that exact moment. At the heart of our vision for smart spaces, LED Linear is proud to introduce MARS EVE – the newest wall wash product and addition to our MARS Architectural family.

MARS EVE is designed to deliver exceptional homogeneity to illuminate wall spaces with utmost precision. We understand the distracting impact glare can have on visual experiences, so our engineers developed superior glare control technologies to minimize discomfort and maximize light distribution.

### OUR DEDICATION DOESN'T STOP AT COMFORT.

Our dedication extends to individualization. We believe lighting should be as unique as the individuals it serves and the spaces it illuminates, so we designed our new Wall Washer with customizable features to support the varied needs and preferences of our customers – all with a strong focus on sustainability. Engineered with optional sensors and smart lighting technology, MARS EVE reduces energy consumption and carbon emissions to provide a well-lit environment without compromising the future of our planet.

### MORE THAN JUST LIGHTING.

MARS EVE is leading the revolution for the creation of spaces that think, feel, and respond to the people within them. Welcome to the future of lighting, where homogeneity meets personalization and sustainability.

MARS EVE WALL WASH

# KEY FEATURES OF MARS EVE

## 01 EXCEPTIONAL HOMOGENEITY

Highly advanced technological developments guarantee incredible homogeneity in the level of illumination and color consistency on walls.

## 03 SUSTAINABLE SMART LIGHTING

Technological advancements allow a seamless integration within the building control system to optimize energy consumption.

## 02 OPTIMAL GLARE CONTROL

Minimizing disturbing light reflections improves the visual comfort of a space to ensure a pleasant, comfortable experience.

## 04 CUSTOMIZABLE TOOLBOX

Highly flexible: Being part of the MARS Architectural family means that MARS EVE is settled within a versatile and modular toolbox.

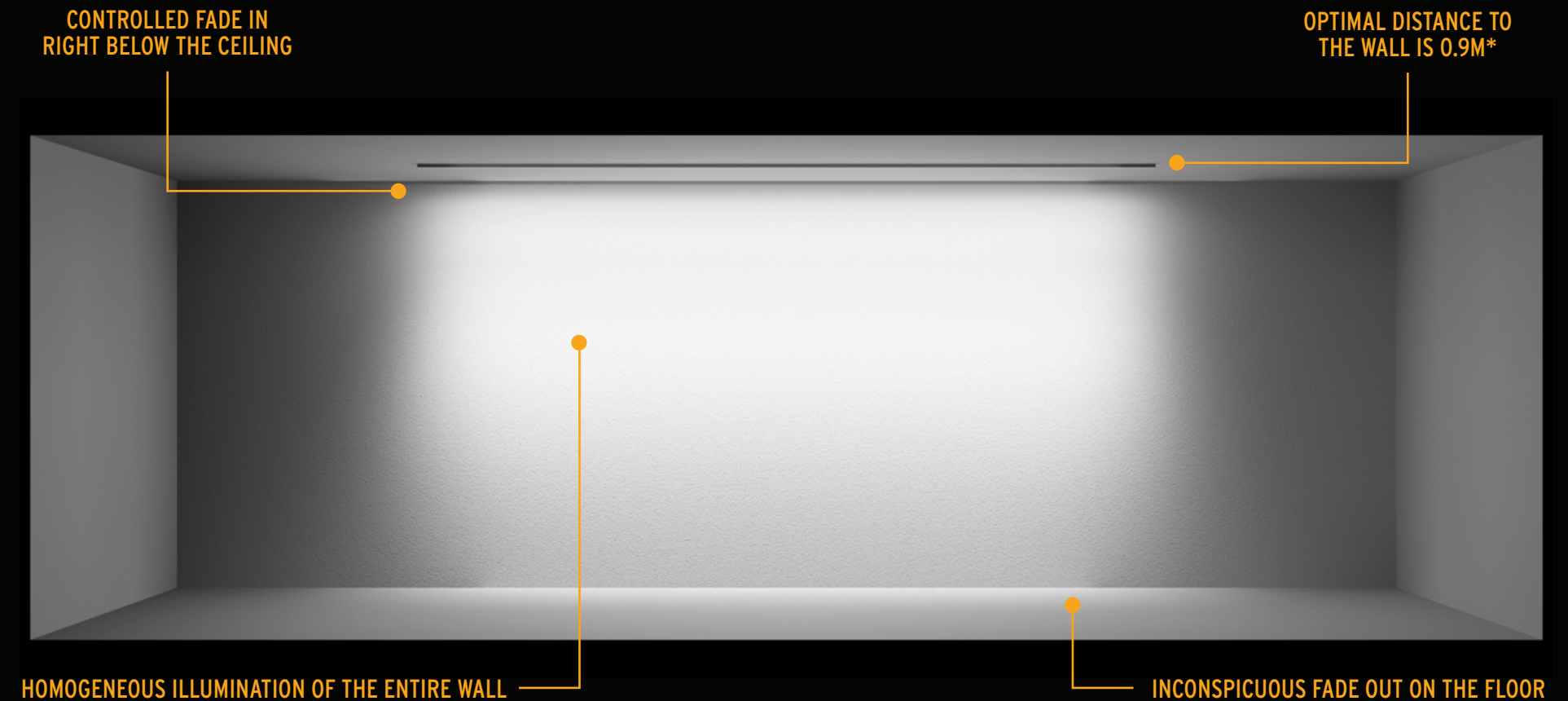
## 05 NO MULTI-SHADOWING

MARS EVE Wall Wash ensures no shadows are cast on walls by viewers, even at a distance of 0.3m.



# EXCEPTIONAL HOMOGENEITY

MARS EVE features a state-of-the-art optical system perfected after more than 50 design iterations supported by a super computer. Highly advanced technological developments guarantee incredible homogeneity in the level of illumination and color consistency on walls, setting new standards for lighting quality to create beautifully illuminated spaces.



Ratio of 0.81 in range between 2.75m /1.05m above the floor with a ceiling height of 3m.

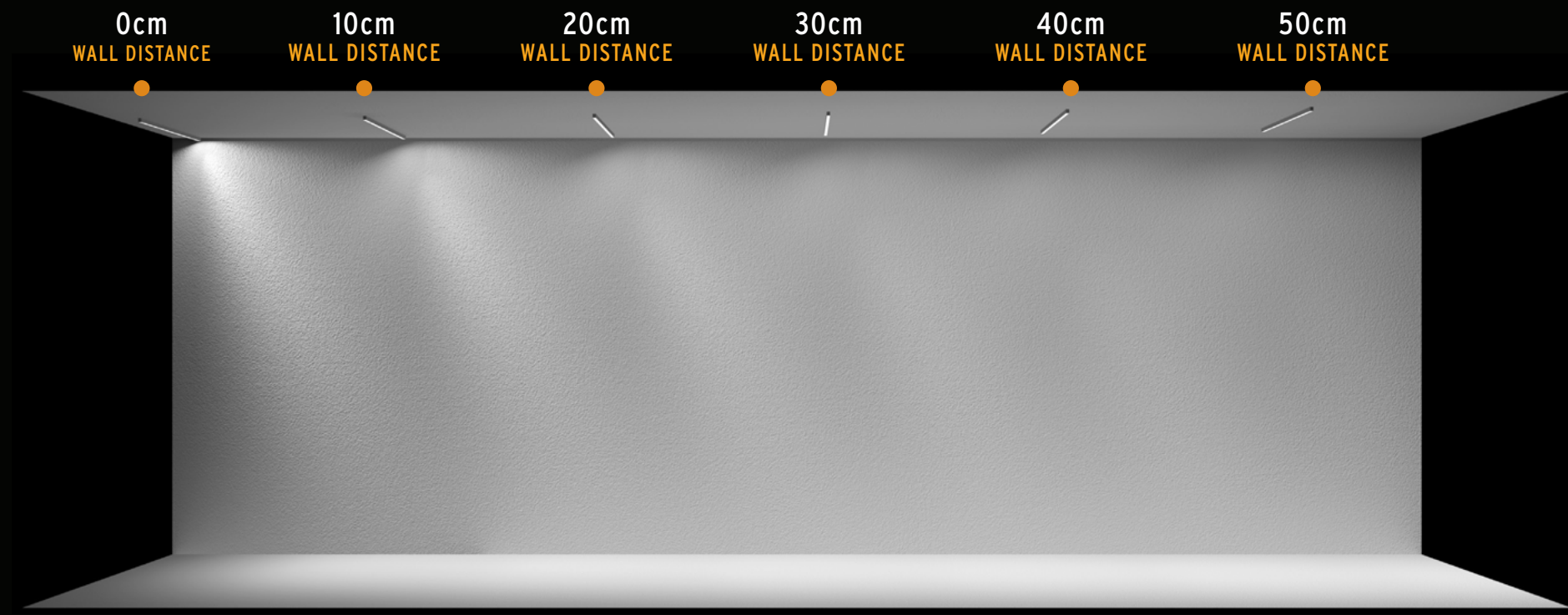
\*for a wall height of 2.7m



# OPTIMAL GLARE CONTROL

MARS EVE delivers perfect glare control while preventing all instances of longitudinal glare. Minimizing disturbing light reflections improves the visual comfort of a space to ensure a pleasant, comfortable experience.

ILLUSTRATION OF SIDE SPILL LIGHT WITH LUMINAIRES SET AT DIFFERENT DISTANCES TO WALL - FOR PERFECT GLARE CONTROL!



# SUSTAINABLE SMART LIGHTING



Sensors and smart lighting technology significantly reduce energy consumption while the luminaire is operating, promoting optimum comfort, efficiency, and sustainability. Integrating sensors into MARS EVE with on-board or remote decision-making control systems makes the luminaire even more intelligent and adaptable, resulting in several advantages:

80-90%

of a luminaire's CO<sub>2</sub>e footprint occurs during the use phase.

DAYLIGHT

harvesting ensures optimal lighting for tasks, promoting ideal working conditions.

Switching luminaires off, or

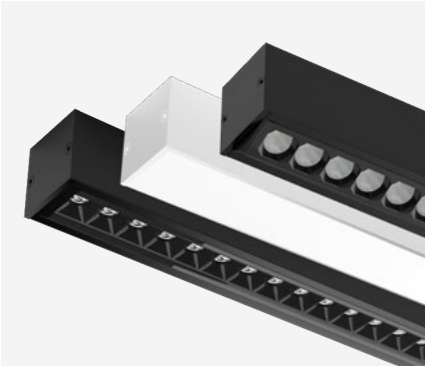
DIMMING

them down to a low standby level, saves valuable energy.

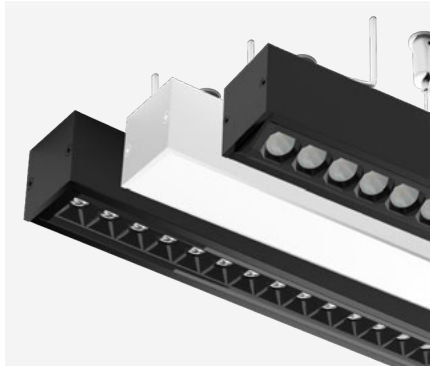
# CUSTOMIZABLE TOOLBOX



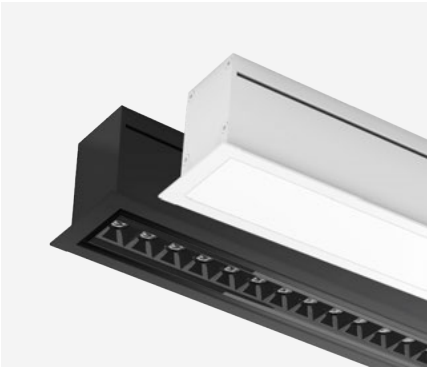
MARS RECESSED  
Type 24



MARS SURFACE  
Type 42

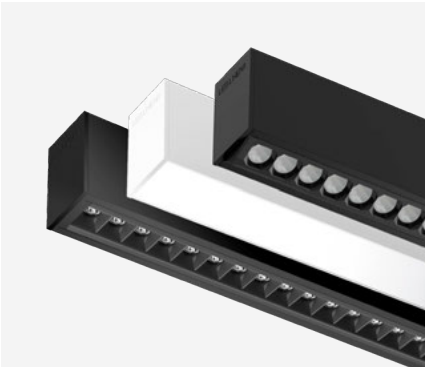


MARS PENDANT  
Type 42

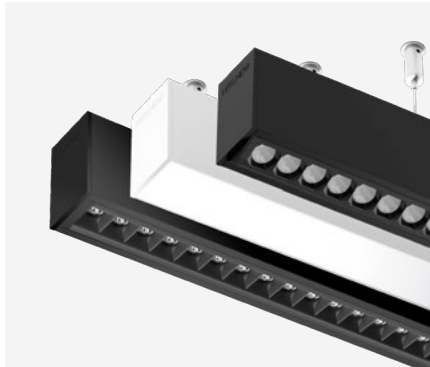


MARS RECESSED  
Type 62\*

*\*Not yet available as housing for MARS EVE Wall Wash.*



MARS SURFACE  
Type 62



MARS PENDANT  
Type 62

Versatile and modular, the MARS family transforms the MARS EVE into a highly flexible luminaire. Integrate the wall wash smoothly into continuous rows and combine it with sensors to achieve a highly customized smart lighting solution.

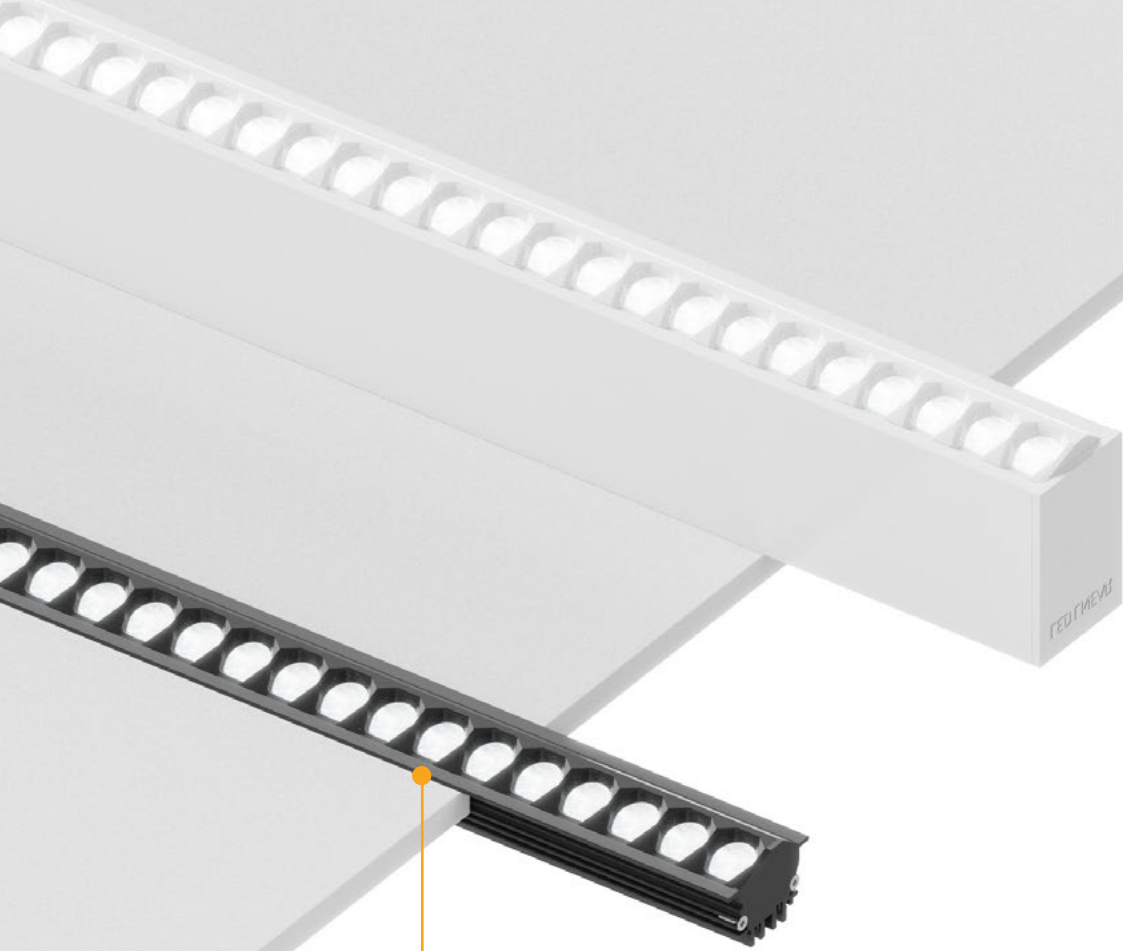
# NO MULTI- SHADOWING

Engineered to eliminate multi-shadowing, MARS EVE ensures no shadows are cast on the illuminated wall by viewers in front of it, even at a short distance of 0.3m.

This offers a great advantage in museum or gallery applications compared to traditional non-linear solutions. The viewers contemplate the art, not their shadows. Likewise, no distracting scalloping on walls or ceilings is produced

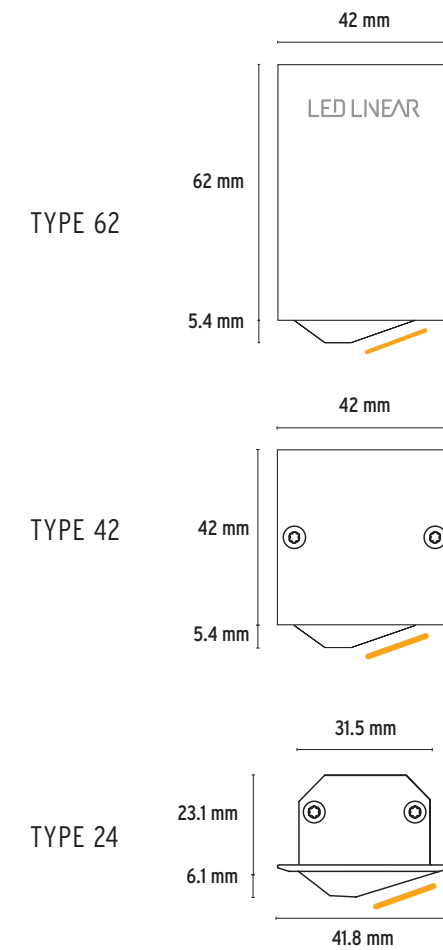






PROTRUDES ONLY 7.6 MM  
FROM THE CEILING

# DIMENSIONS



MARS EVE WALL WASH





# MINDFUL

## TOWARDS ART HERITAGE

In general, when objects are exposed to light, various aging effects can occur. These effects depend on the material, the light source’s spectrum, exposure time, and intensity. Among these effects are fading, darkening, discoloration, increased brittleness, cracks, or even dissolution. Sunlight, with its wide spectral mix including UV, is far more harmful than artificial light from LED luminaires.

The damage factor rates how harmful the spectrum of a particular light source is for various materials. The materials considered typically include objects displayed in museums. This factor depends on the spectrum and intensity per wavelength of the light source and is expressed in milliwatts per lumen (mW/lm).

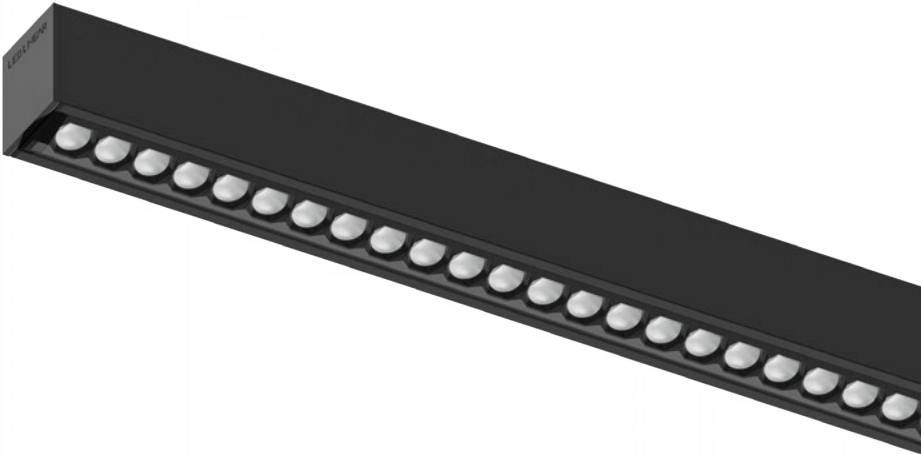
Generally, a factor smaller than 0.2 is considered suitable for illuminating art and historical objects. Warm white light sources are especially suitable, as they have only a very small short-wave blue component in their spectrum.

MARS EVE has a damage factor of less than 0.2 for color temperatures of 3500K and warmer while maintaining an excellent color rendering index greater than 90. By using motion/presence sensors in a smart installation, the exposure time of exhibited objects can be further reduced.



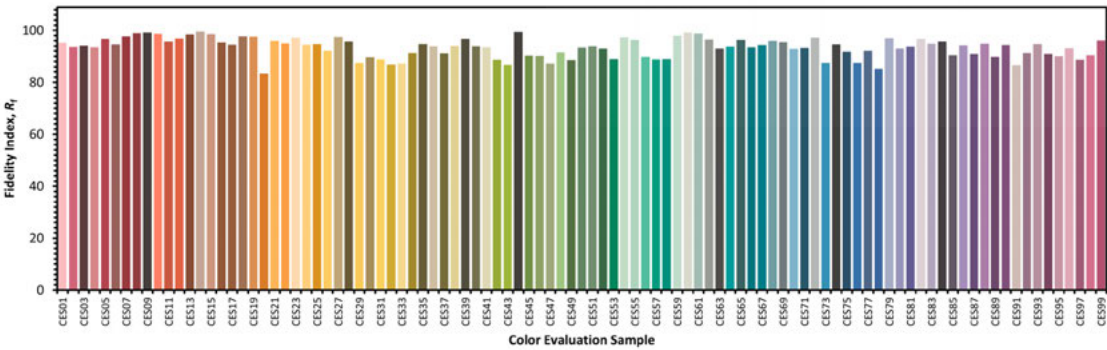
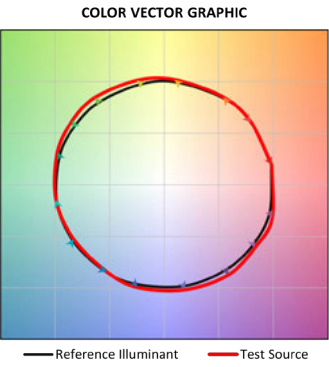
# COLOR RENDITION

## AND TEMPERATURES



CRI 95 R9 75 R<sub>f</sub> 93 R<sub>g</sub> 101

### COLOR RENDITION (@3,000 K)



### COLOR TEMPERATURES (KELVIN) \*on demand

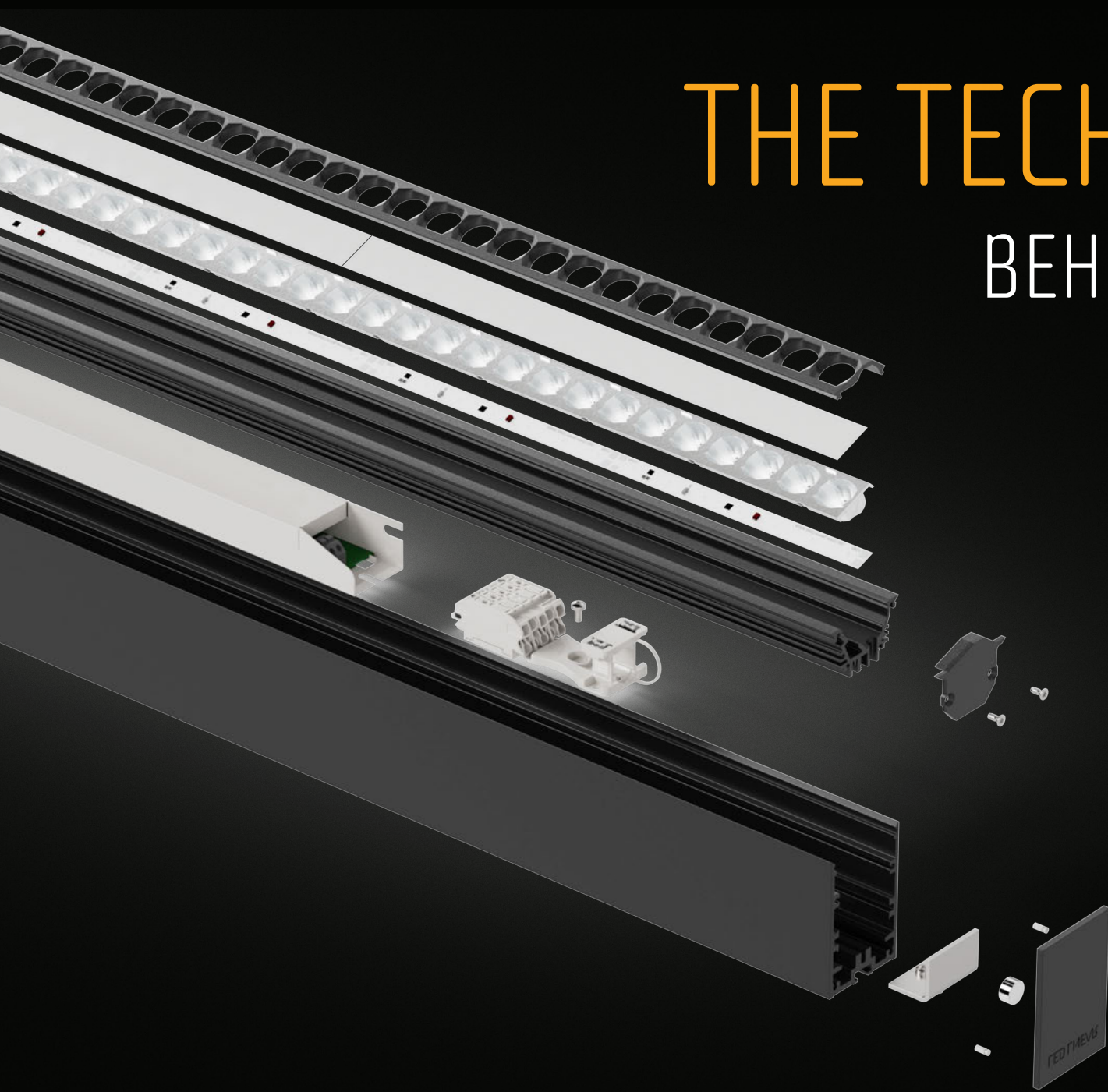
2200\* 2700 3000 3500 4000 5000\*

### BINNING

3 SDCM with a binning tolerance of +/- 0.003 (True 3 step MacAdams)

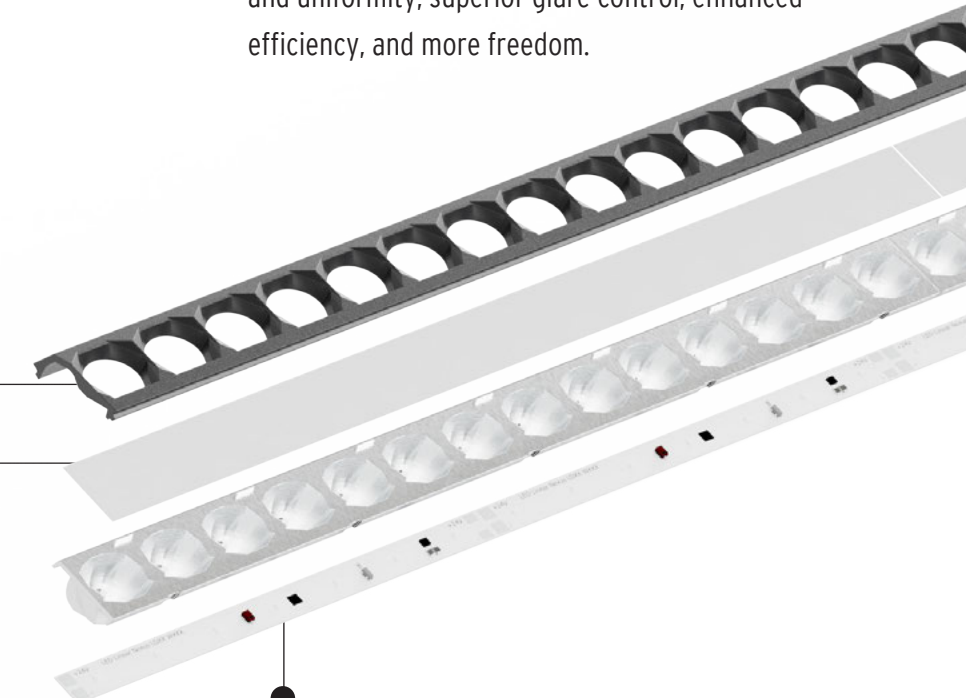


# THE TECHNOLOGY BEHIND MARS EVE



# MASTER TECHNOLOGIES

MARS EVE was developed with industry-leading technologies to deliver unmatched light distribution and uniformity, superior glare control, enhanced efficiency, and more freedom.



## GLARE CONTROL

Glare control is ensured by an elegant louver, which is a result of multiple optimizations to conceal the light source within a minimal height. This way, the lighting appears more natural and less distracting.

## NANO RAY

The NanoRay 2.0 optics house more than 220,000 nano lenses in each LED cell. The lens details, smaller than 1 nm, accurately guide each light beam and ensure a proper mixing of wavelengths to deliver smooth, natural light. The sharp, even light distributions and homogeneous color illuminate entire environments, requiring fewer materials for more power.

## CHIP SCALE LED

MARS EVE features the only Chip Scale Package (CSP) LED flexible light engine worldwide, offering prime color rendition and sound thermal performances positioned with a 0.1mm precision.



# SMART LIGHTING

## THE PATH TO ELITE INNOVATION IS NARROW

The smart lighting markets have grown significantly over the past several years, driven by advances in miniaturization, simplification, and extensive integration possibilities. Technological advancements have allowed for the greater connection of building control systems, including lighting. LED Linear is proud to be at the forefront of the movement toward smart lighting solutions.

A growing number of government incentives and regulations are encouraging the construction of sustainable and efficient buildings, as well as the modernization of existing structures. In all application scenarios, modern lighting controls play an essential role in enhancing lighting comfort and reducing energy consumption (CO<sub>2</sub>e/usage phase). There is great potential for meeting sustainability requirements when combining customized lighting scenes with sensor data.



SUSTAINABLE



FLEXIBLE



CONNECTABLE



LEARN MORE ABOUT OUR  
SMART LIGHTING SOLUTIONS



EXPLORE OUR  
SUSTAINABILITY EFFORTS

# ILLUMINATING A BRIGHTER FUTURE

## SUSTAINABILITY

At LED Linear™, sustainability is our driving force. We are committed to minimizing our impact on the planet and meeting our social responsibilities. Through our comprehensive sustainability strategy, we aim to minimize our ecological footprint, foster an inclusive workplace, and promote economic resilience. Explore our initiatives and join us in creating a brighter future.



# EXPERIENCE THE EVENNESS OF MARS EVE

Witness how MARS EVE elevates spaces with beautiful, uniform light in our fully developed 3D environment.



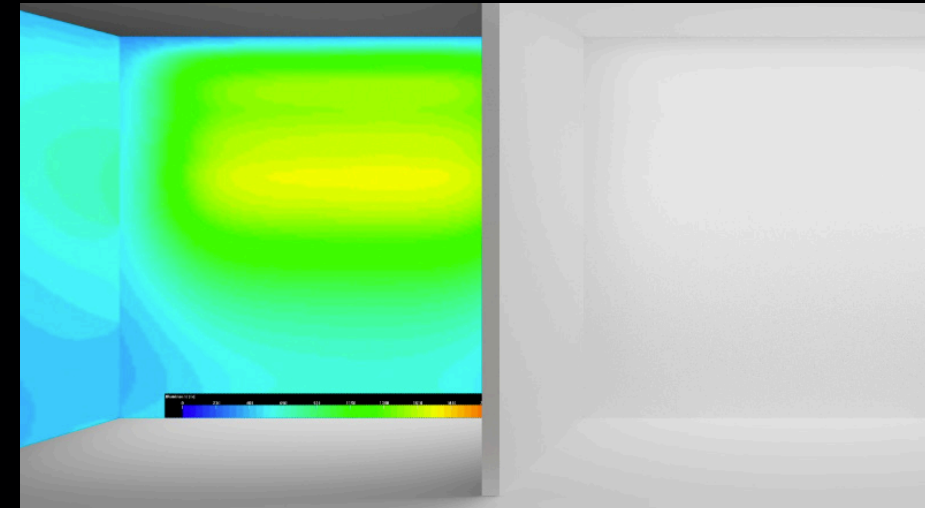
CHECK OUT OUR WALL WASH  
LIGHTING VR EXPERIENCE



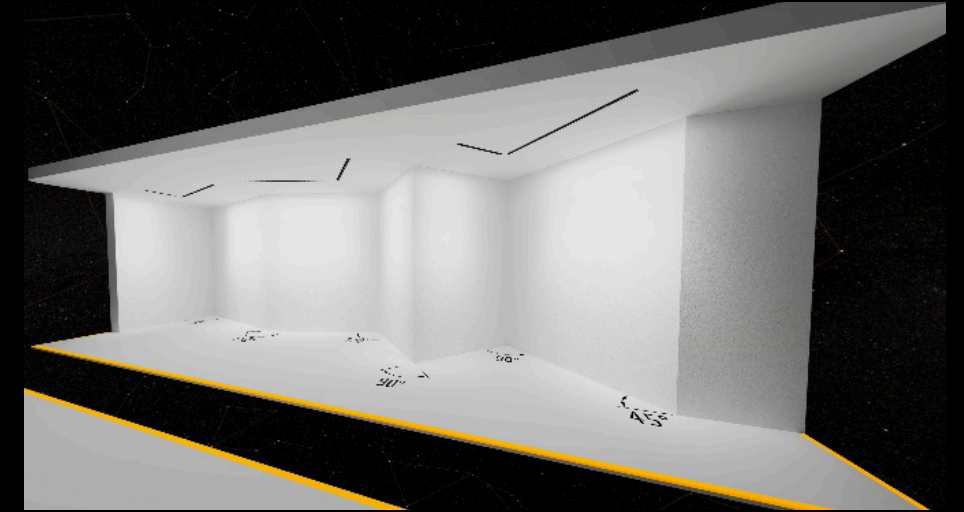
## EXPLORE OUR VIRTUAL MARS EVE SHOWROOM



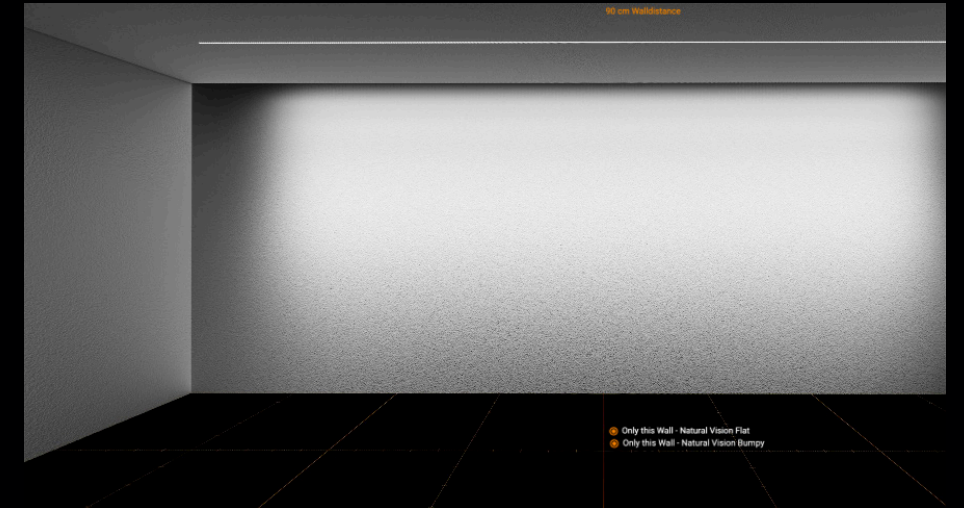
WALL DISTANCE



ILLUMINANCE



DIFFERENT CORNER ANGLES



WALL TEXTURES

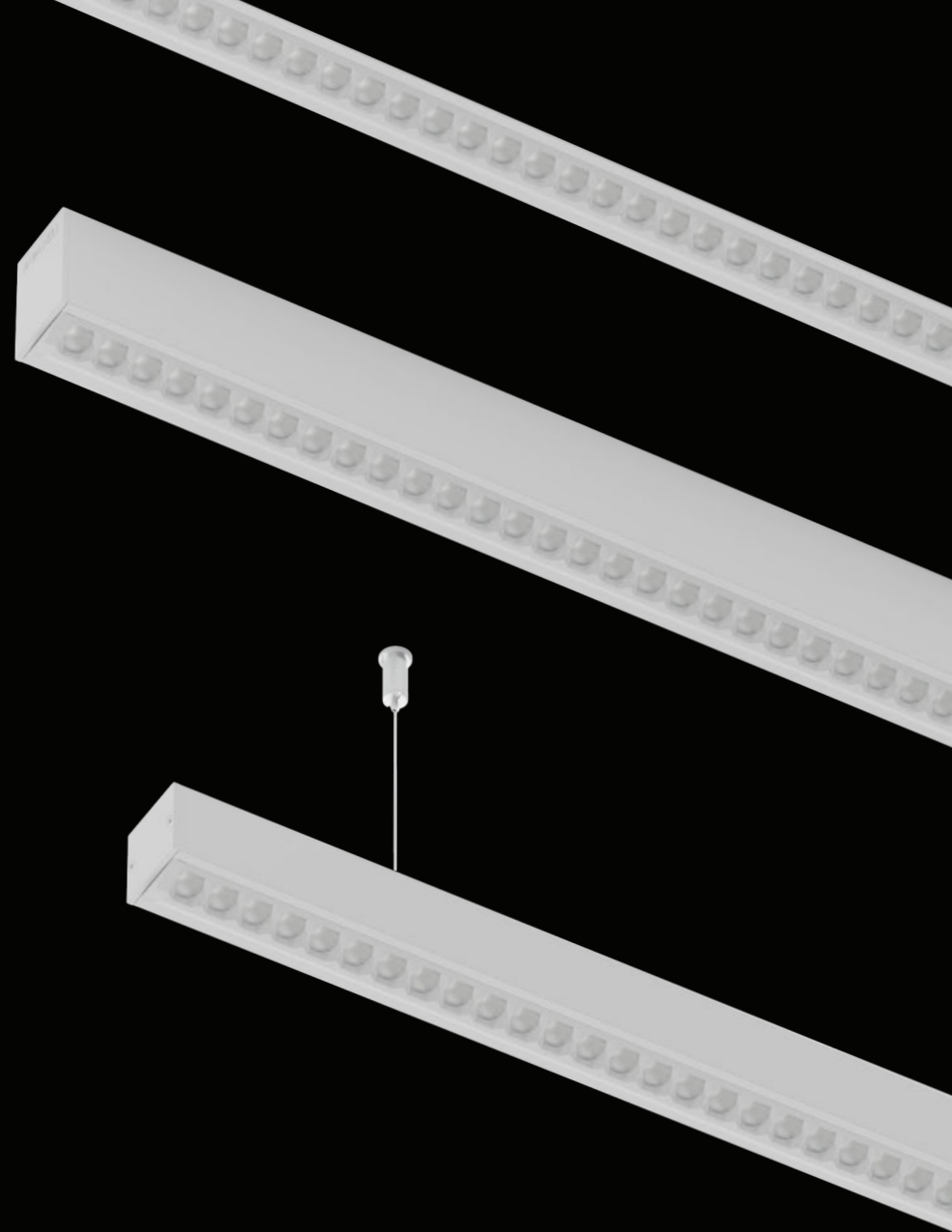
# LED LINEAR™

A Fagerhult Group Company

## LED Linear™ GmbH

Dr.-Alfred-Herrhausen-Allee 20  
47228 Duisburg, Germany

Phone +49 2065 94322-100 Fax +49 2065 94322-120  
[Germany@led-linear.com](mailto:Germany@led-linear.com)



Art.-# 3300054 · Edition 09/2024  
All rights reserved, subject to change.

